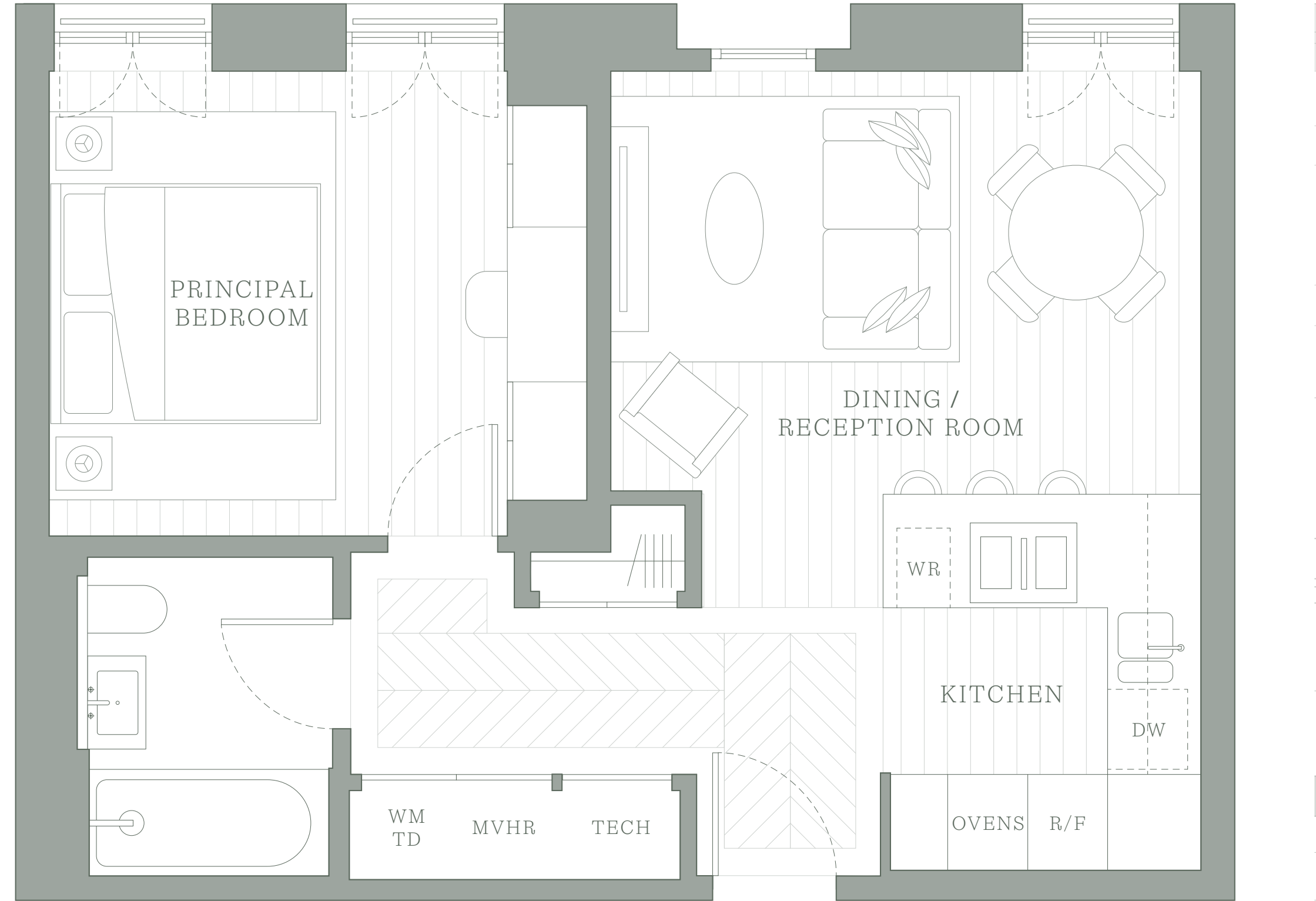


APARTMENT E205

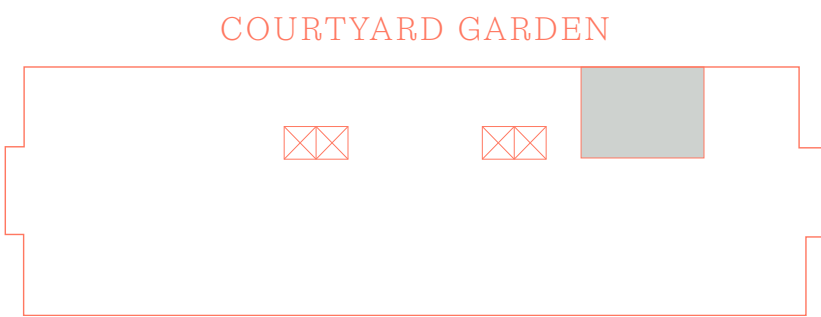
Floor 2
1 Bedroom

Internal	54 m ²	576 ft ²
Entrance Hall	1.4m × 2.9m	4'7" × 9'6"
Reception and Dining	4.4m × 3.2m	14'5" × 10'6"
Kitchen	2.4m × 2.9m	7'10" × 9'6"
Principal Bedroom	4.1m × 3.5m	13'5" × 11'6"

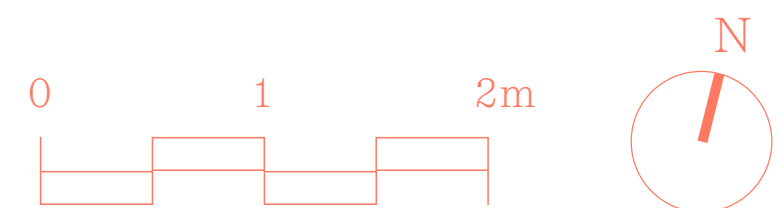
100
GST



COURTYARD GARDEN ELEVATION



GEORGE STREET



RESIDENCE SPECIFICATION

41 residences carefully composed by globally renowned developers
Native Land in collaboration with Hopkins Architects.

EXTERNAL SPECIFICATION

- Handmade Yorkshire brick facings
- Reconstituted stone lintels and copings
- Dark bronze PPC aluminium window and door frames
- Dark bronze PPC aluminium balustrades and planters
- Limestone paving to terraces

WALLS, FLOORS, CEILINGS

- Party walls are double stud partitioned with high-strength Habito plasterboard
- Skim and painted finish to party walls and interior walls
- Bespoke painted timber skirting throughout
- Ceilings are set plasterboard on metal framework with skim and painted finish
- Floor to ceiling heights in reception rooms and bedrooms are generally 2.7m and in bathrooms, hallways and kitchens are 2.5m
- Premium grade timber floors to entrance, hallways, reception rooms, kitchens, and primary bedrooms
- Secondary bedrooms carpeted
- Natural stone walls and porcelain tile flooring to all bathrooms
- Floor boxes with matching floor finishes in reception rooms for all 3-4-bed residences and dual aspect 2-bed residences
- AV, telephone and hyper-fast broadband
- Network cable fitted throughout
- Power sockets with integrated USB/USBC outlets
- Video intercom interface located at residences entrance

JOINERY

- Dark veneered front doors with dark bronze ironmongery and trims
- Built-in wardrobes with light textured oak veneered doors and vanity counter with recessed dark bronze metal handles. Wardrobe interior carcass to be finished in linen melamine with polished stainless-steel clothes rail and hinges
- Electric bioethanol fireplaces with bespoke surrounds for selected residences

LIGHTING

- Low-voltage LED lighting throughout
- Recessed LED down-lights installed with additional feature lighting in joinery
- Cabling provisions for decorative pendant luminaires in living-dining areas
- 5 amp light switch controlling and 5 amp sockets for table-free standing luminaires

HEATING, COOLING AND VENTILATION

- Underfloor heating system in all principal rooms and bathrooms
- Active comfort cooling in all principal rooms
- High efficiency home ventilation system with background trickle and boost modes
- Operable windows for maximum natural ventilation

KITCHEN SPECIFICATION

- Bulthaup B3 kitchen units with natural timber veneer and feature lighting
- Grey Quartzite worktop and splash back for all kitchens and connecting utility rooms
- Kitchens include Miele (or similar) appliances:
 - Induction hob and concealed or surface mounted extractor
 - Oven
 - Combination microwave
 - Warming drawer (to larger apartments)
 - Fridge-freezer
 - Dishwasher
 - Wine fridge
 - Washing machine and Tumble Dryer or Washer Dryer
 - Franke sink
 - DornBracht or Quooker instant hot water tap
- Bulthaup B3 kitchen units with lacquered doors and composite worktops to separate utility rooms

BATHROOM SPECIFICATION

- Primary bathroom walls finished in Silver Travertine
- Guest bathroom walls finished with white marble
- Porcelain tiles to bathroom floors
- Brassware, fixtures and fittings in dark bronze finish
- Bathroom fittings by Duravit, DornBracht, Bette, Bard & Brazier and CP Hart (or similar)
- De-mister on all bathroom cabinets
- Half height Silver Travertine powder rooms in W201, W301, E201, E301 and E401

100GEORGEST.COM

 NATIVELANDLIFESTYLE

DESIGN DEVELOPMENT

Please note that all aspects of the design for 100 George Street are continuously reviewed and Derwent London George Street Limited reserve the right to make alterations to the design without notice.

COPYRIGHT

Copyright for this document is retained by Derwent London George Street Limited. The reproduction of the whole or any part of this document is strictly prohibited.

IMPORTANT NOTICE

Please note that design development of 100 George Street is ongoing and items of the specification will be liable to change without further notice. All images are indicative only. November 2023.

A DEVELOPMENT BY



IN PARTNERSHIP WITH

DERWENT
LONDON



SALES REPRESENTATION



THIS WORDING IS IMPORTANT AND REQUIRES YOUR ATTENTION. IF YOU ARE UNSURE ABOUT ANY OF THE MATTERS SET OUT IN THESE TERMS AND CONDITIONS, PLEASE REFRAIN FROM TAKING ANY ACTION WITHOUT FIRST TAKING APPROPRIATE PROFESSIONAL ADVICE These particulars and any content within them (including, without limitation, any text, images, photographs, graphic designs, advertisements), is provided for general information only and is no substitute for detailed and specific investigations made by or on your behalf by reference to your specific requirements and circumstances. It is not intended to amount to advice on which you should rely and is not intended to be relied upon by you in making (or refraining from making) any specific investment, purchasing or other decisions. You must obtain professional or specialist advice before taking any action on the basis of the content on our website. These particulars are prepared for the guidance only of prospective owners, tenants and occupants. They are intended to give a fair overall description of the property but are not intended to constitute part of an offer or contract. Any information contained herein (whether in the text, plans or photographs) should not be relied upon as being a statement or representation of fact. Nothing in these particulars shall be deemed to be a statement that the property is in good working condition or otherwise, nor that any services or facilities are in good working order. Any areas, measurements or distances referred to herein are approximate only. Descriptions of a property are inevitably subjective and the descriptions contained herein are used in good faith as an opinion and not by way of statement of fact. Neither Derwent London George Street Limited nor any of its employees, agents or advisors have any authority to make or give any warranty whatever in relation to this property and no such warranties shall be implied or deemed to be given by any person. Nothing in these particulars is intended to be a representation or to induce any party to enter into any contract or agreement whatsoever. To the fullest extent permitted by law, and save in respect of fraud or fraudulent misrepresentation, Derwent London George Street Limited nor any of its employees, agents or advisors will have any liability under the Misrepresentation Act 1967. PRIVACY NOTICE Native Land Limited is acting as the marketing and sales manager of 100 George Street. In this role Native Land will collect and share personal information about potential or actual purchasers of apartments at 100 George Street with Derwent London George Street Limited (the owners of 100 George Street). For the purposes of UK data protection laws, Native Land and Derwent London are joint controllers of this personal information. Please see the joint controller privacy notice at www.100georgest.com for details about how Native Land and Derwent London process your personal information as joint controllers. © November 2023.

Important Notice:
Please note that all aspects of the design and specification for the development at 100 George Street are continuously reviewed and Derwent London George Street Limited reserve the right to make alterations to the design without notice.